



Open:
Monday–Wednesday, 8 a.m. to 4 p.m.
Thursday, 10 a.m. to 6 p.m.
Friday, 9 a.m. to 1 p.m.
2nd Saturday (April through November), 9 a.m. to 1 p.m.

Dear Parent:

Did you know every person in the United States makes 4.5 pounds of trash per day?! That's a LOT of trash! To help kids understand how we dispose of all that trash, I visited their classroom today and we made an edible model of a landfill. What a yummy way to discover what's in trash and to see why the 3Rs — Reduce, Reuse, Recycle — are so important.

We want everyone in Kosciusko County to know that when they throw things “away” they have choices. And those choices matter! That's why we set up the nine recycling drop-off stations around the county. We want you to be able to recycle easily and close to home!

Did you also know that we take TVs? Plus, we accept paint, household chemicals, light bulbs, motor oil, and a whole lot more! Just bring your items to the KC Recycling Depot at 220 S. Union Street in Warsaw. Learn about all of our programs at www.kcrecycling.com.

Kids aren't the only ones who enjoy our programs. We offer tours, workshops, and fun presentations for adult groups, too. Would you like to learn about composting or green shopping? Maybe you would like to play a game of Household Hazardous Waste Bingo or Environmental Jeopardy. Contact me for a list of programs.

Sincerely,

Sarah Baier
educationsource@embarqmail.com
574-372-3087

Like us on Facebook



FREE Recycling for Your Old TV or Microwave!

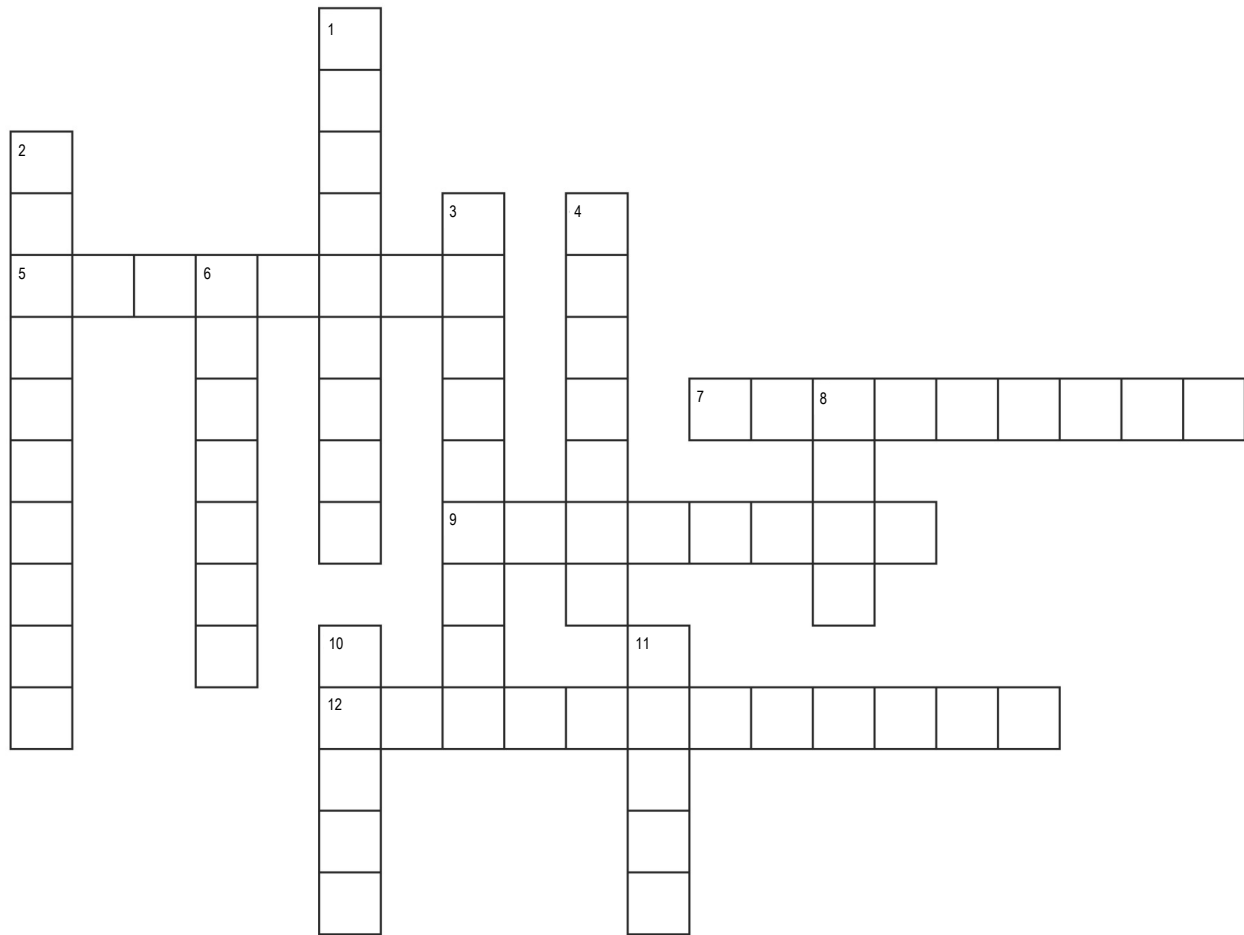
Bring this coupon to the KC Recycling Depot and recycle one old television or microwave for FREE (\$5 value)!

KC Recycling Depot
220 South Union Street
Warsaw
www.kcrecycling.com
574-372-3087



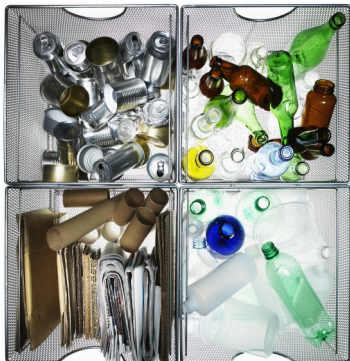
*One coupon per household.
Offer expires December 31, 2018.*

What's in Our Waste?



Across

5. Garbage juice (liquid in a landfill)
7. To break down organic waste
9. Replaced what used to be called a dump
12. Natural scraps from food or your yard



Credit: Ryan McVay | Digital Vision | Getty Images

Down

1. Protects products during shipment and before use; makes up much of our trash
2. Everything left over from the things we use
3. Keeping waste out of landfills and converting it into new products
4. Flammable gas that can be collected at a landfill and used as energy for heat or electricity
6. Decayed organic material that can be used to improve soil
8. Area within a landfill where each day's waste is placed, compacted, and covered
10. Something poisonous to humans and animals is _____
11. Geo-synthetic layer that keeps landfill liquids from polluting the environment